

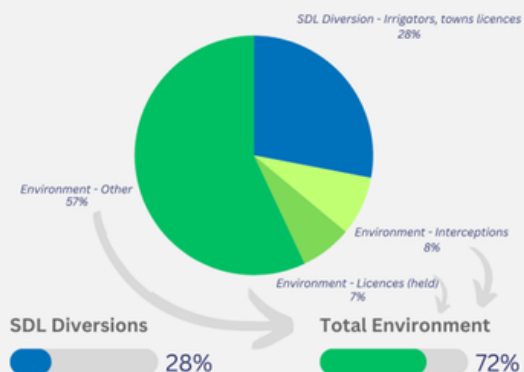
# A CASE FOR STABILITY IN THE MURRAY DARLING BASIN: THERE'S NO NEED TO REDUCE WATER FROM FARMING

## The balance has been struck

After three-decades of reforms to 'rebalance' water-shares, 72% of inflows now remain in rivers for the environment, with just 28% left to sustain Australia's food bowl, town water supplies and other industries.

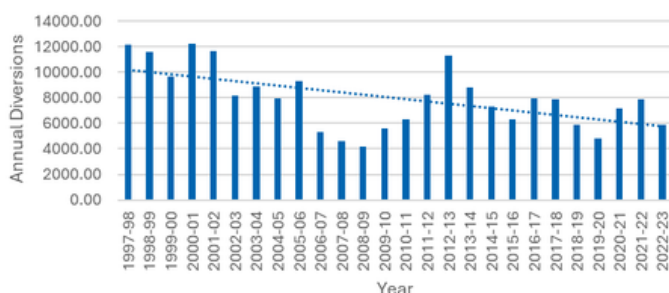
Sustainable Diversion Limits (SDLs) are now in force, with full compliance.

## MDB WATER BALANCE



## Farmers and communities need stability of water security

### MDB ANNUAL DIVERSIONS



↓ **1 IN 3 LITRES** of water has already been removed from farming since the 1990s.

Constant reforms create uncertainty. In these increasingly uncertain times. Stability is needed.

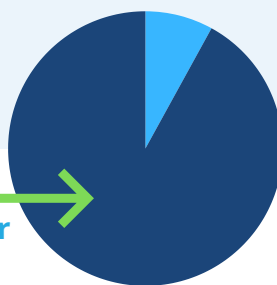
## The environment needs more than 'just adding water'

Today's science says the biggest environmental problems are:

- Getting environmental water to wetlands and riparian land
- Invasive species (such as carp)
- Barriers to fish passage
- Habitat degradation
- Need for fish screens on pumps

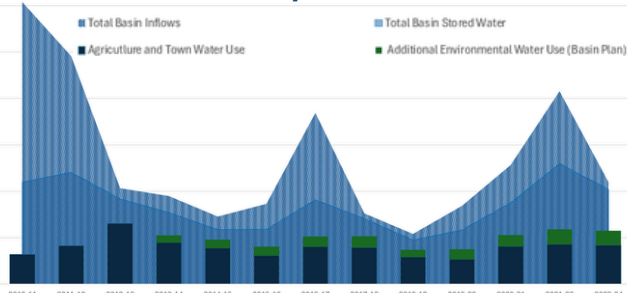
Just adding water simply cannot fix these.

MDBA data shows 92% of environmental indicators would not improve with further water recovery.



## Water allocations already directly respond to climate

### MDB INFLOWS, STORAGE & USE



Water allocations already vary up or down in response to climate.

Town water and the river are prioritised before water licences for farming.

Buybacks won't deliver extra water in a drought, as allocations are already low or zero. Smarter infrastructure that is fit for purpose for drier times can help all water users be more resilient.



National  
Irrigators'  
Council

# RESPONSE TO BASIN PLAN REVIEW DISCUSSION PAPER

## BASIN PLAN 2.0

### Time to move forward: There's no need to reduce water from farming

Today's science shows the Basin Plan must move forward.

Protecting river health is more than "just adding water".

There is no need for further reductions in the water for farming.

It's time to optimise existing investment and take practical, on-ground action, working with nature in a stable policy setting.

This includes tackling invasive species, restoring habitat, improving fish passage, and targeting barriers to healthy rivers.

After decades of reform, communities and farmers need stability.

This means no more changes to existing water limits (inc. SDLAM-adjusted) and no more water recovery by any means.

The pathway forward is a partnership with communities who live and work in the Basin - the Basin's future depends on it.



National Irrigators' Council  
Food · Fibre · Future

admin@irrigators.org.au  
02 6273 3637

@Nat\_Irrigators  
@Nat\_Irrigators  
@IrrigatorsCouncil  
@national-irrigators-council

[www.irrigators.org.au](http://www.irrigators.org.au)

FIND  
OUT MORE

Visit us online

[www.irrigators.org.au](http://www.irrigators.org.au)



Moving Forwards:  
NIC Review of the  
Murray Darling  
Basin Plan



Office 8 | Level 3 | 14-16 Brisbane Avenue | Barton ACT  
PO Box 29 | Bellata | NSW | 2397