



Queensland
Hydro

Pioneer-Burdekin
Pumped Hydro Project

October 2022



Overview

- Announcement and Queensland Energy and Jobs Plan (QEJP)
- Project overview
- Cost drivers and comparison to other PHES schemes
- Timelines
- Next steps



QUEENSLAND ENERGY AND JOBS PLAN

Power for generations

70%
Renewable Energy
by 2032

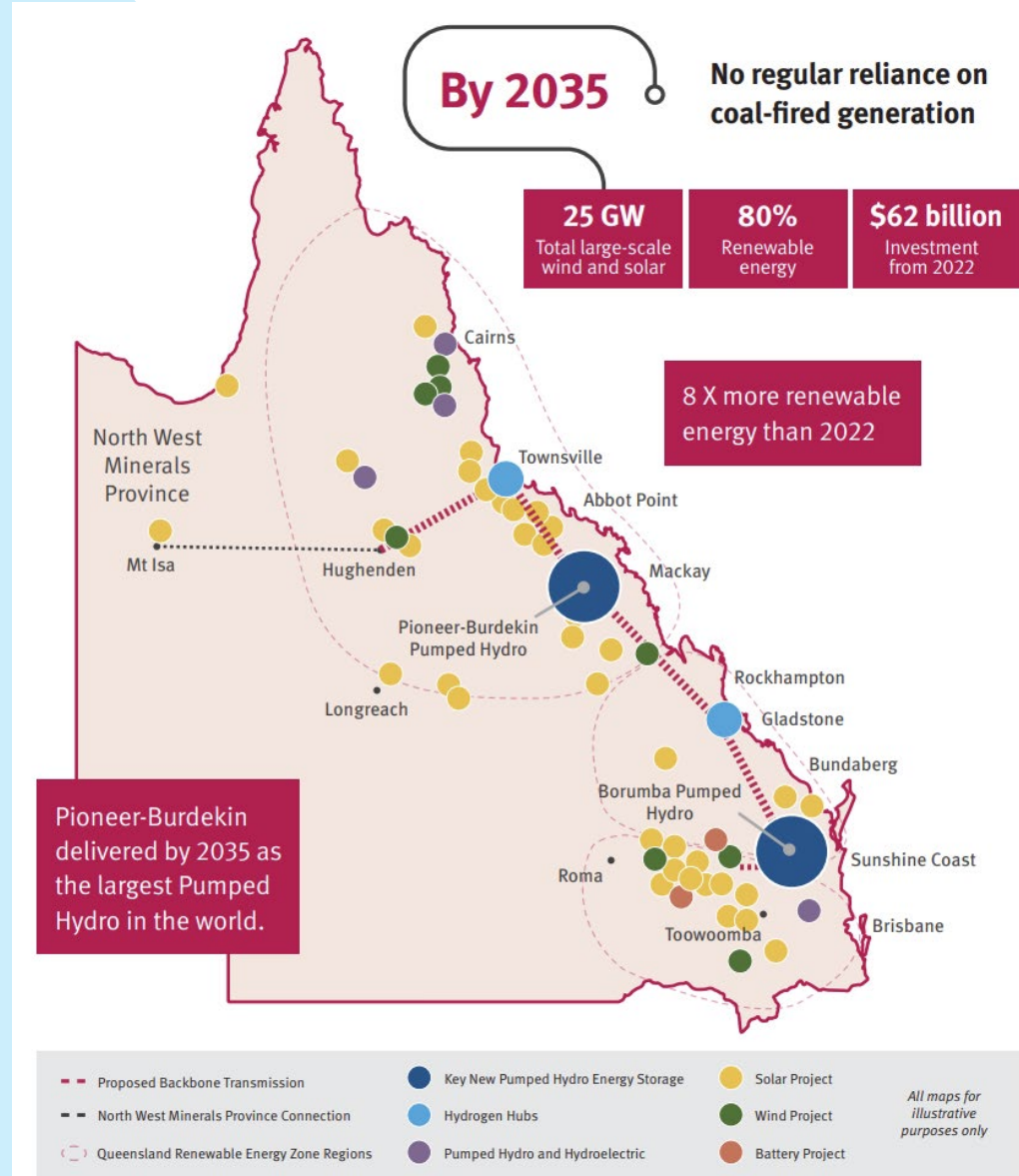


Cleaner Affordable Energy For Everyone

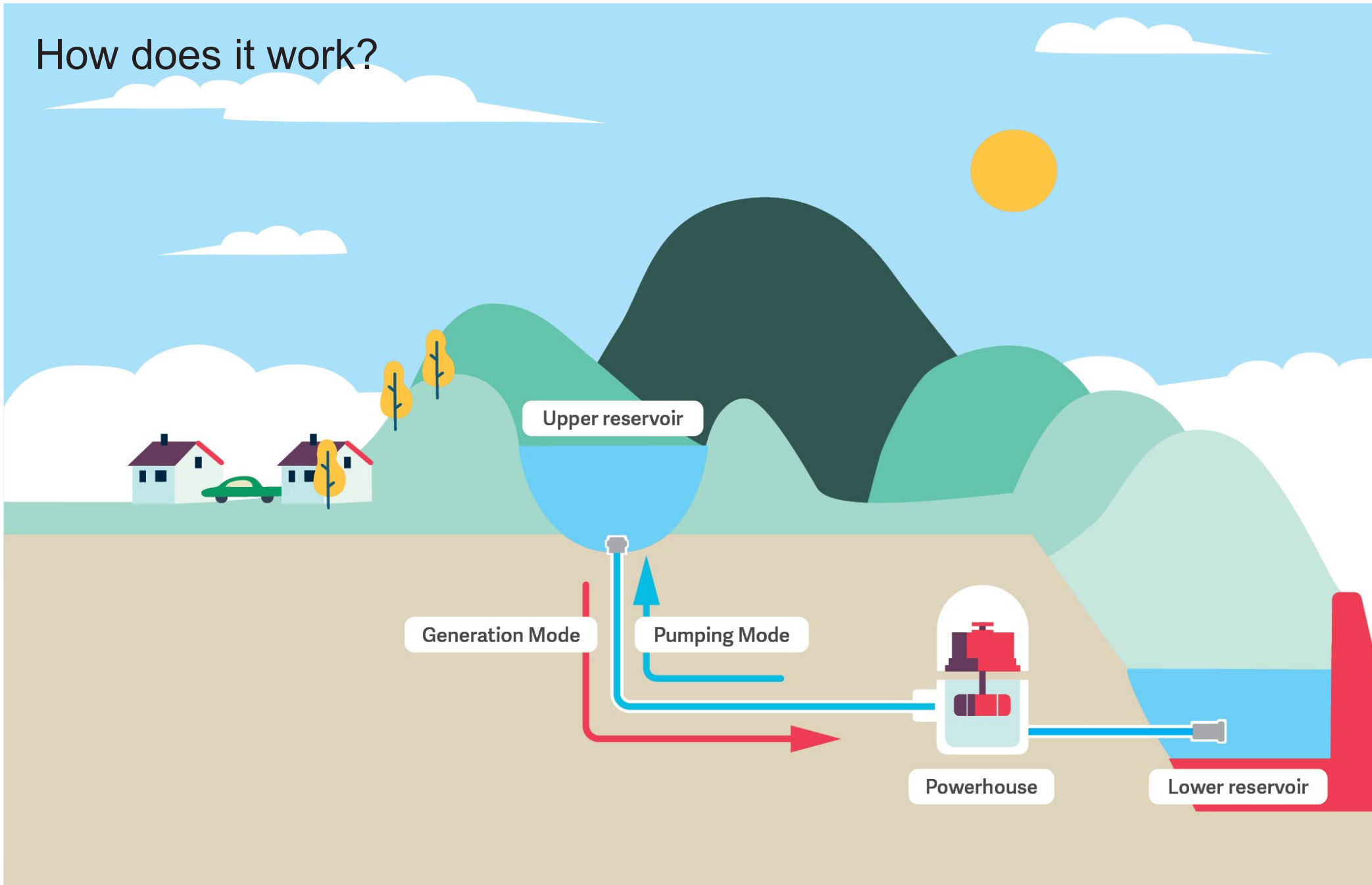


100,000 jobs

OVERVIEW | September 2022



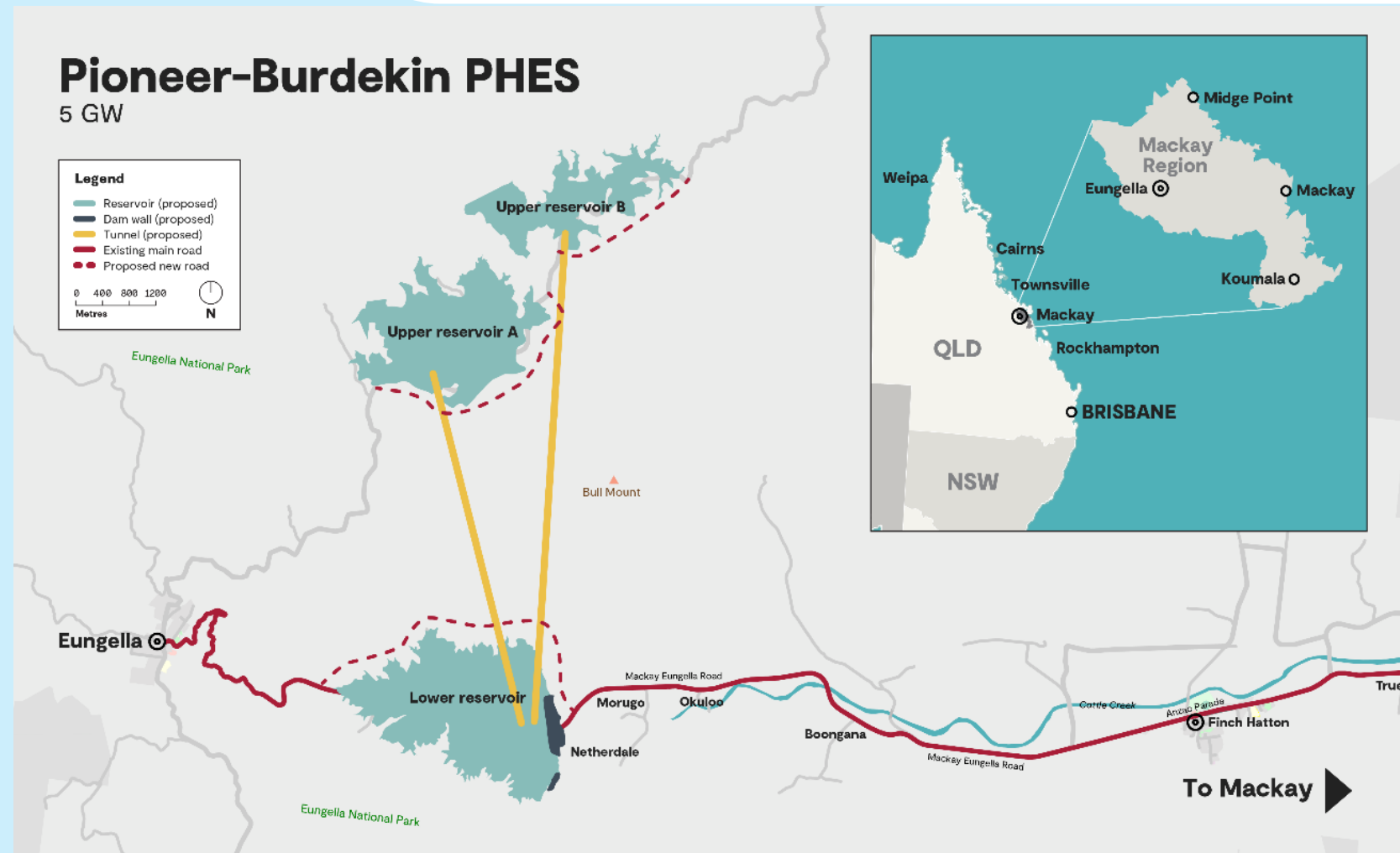
How does it work?





Site location

- The Pioneer Valley is around 75 kilometres west of Mackay
- The site is in the Central Queensland Renewable Energy Zone
- The site has the potential to unlock significant private investment in wind and solar in the region





P-B PHES: Cost Drivers

Project	Pioneer Burdekin – Stage 1	Pioneer Burdekin – Stage 2	Borumba	Snowy 2.0 – NSW	Cethena – TAS
Cost Drivers					
Generation capacity (MW)	2,500	2,500	2,000	2,000	600
Head (m)	676	714	330	679	534
Waterway length (m)	3,585	5,805	2,900	28,000	3,600



P-B PHES Summary

Item	Stage 1 & 2 COMBINED
Cost Drivers	
PHES cost driver #1 – generation capacity	5,000MW
PHES cost driver #2 – rated gross head (average)	695 m
PHES cost driver #3 – waterway length (average per stage)	4.7 km
Local Environmental and Social Impacts	
Inundation area	937 Ha
Number of land parcels	79
Number of residential buildings impacted within reservoir footprint	54
Other key impacts	Visual amenity



Project Timeline



Project announcement

2022

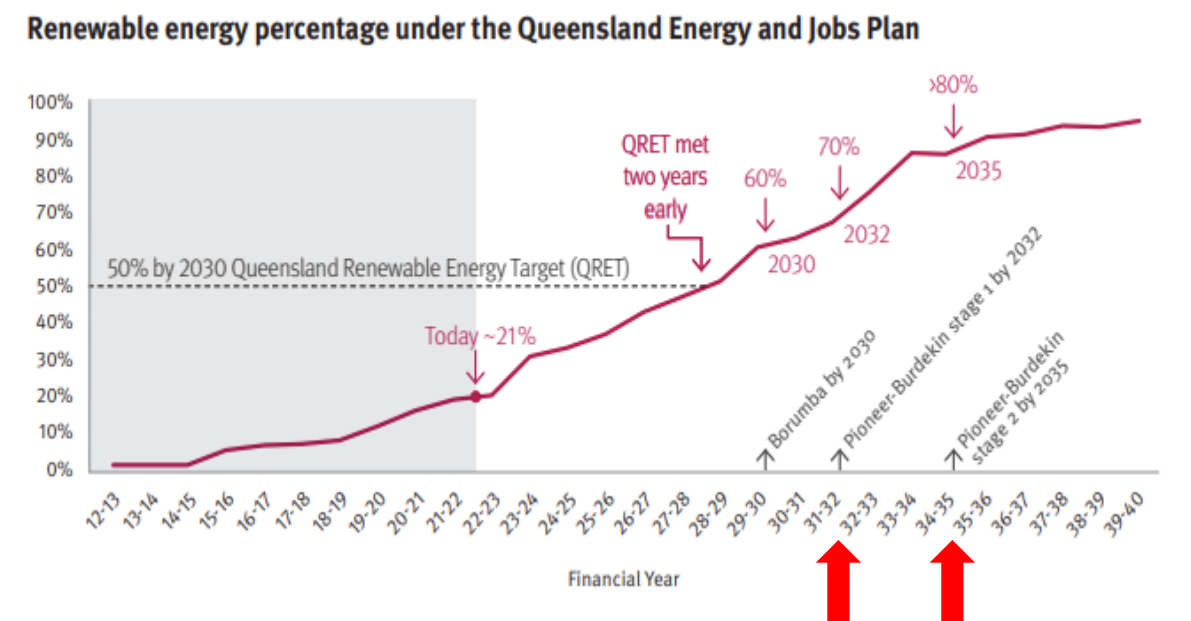
2023

SEP OCT NOV DEC JAN FEB MAR APR MAY JUN JUL AUG SEP OCT NOV DEC JAN FEB MAR APR

Studies commence and go for 18 months

Community and stakeholder engagement to commence (ongoing)

Landowner engagement kick-off (ongoing)



Stage 1
Stage 2



Isogo, Yokohama, Japan.
The most beautiful coal
firedpower station in the
world.
We could have this too





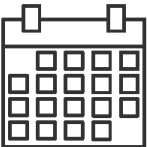
Next Steps



Over the next 18 months, Queensland Hydro will carry out environmental, social and cultural assessments, geotechnical investigations and engineering design.



The project if approved could support several thousand jobs over the construction period, which is expected to extend for more than six years.




If approved, construction will commence following detailed planning, environmental studies, and approval processes.



Get involved – we encourage you to share local insights, feedback and ideas through our website and at community drop-in information sessions.



Get in touch

 1800 875 099

 pioneer-burdekin@qldhydro.com.au

 qldhydro.com.au